



Standard Programme – Hydraulic Chuck
Comp-R

The hydraulic chuck for special requirements!

ADVANTAGE NO. 1

Radial run-out accuracy adjustable to 0 μm



ADVANTAGE NO. 2

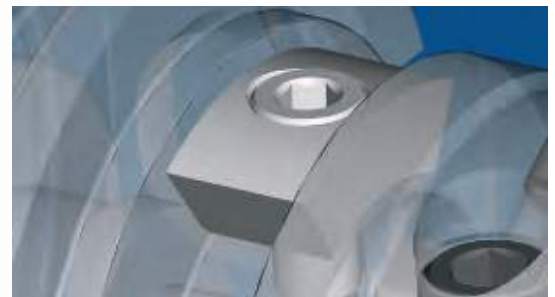
Maximum flexibility due to usage of reducing sleeves



Our arguments make the difference!
Ideal for reaming, long service life,
even force distribution....

**ADVANTAGE NO. 3**

Self-locking due to the thread and the design of the wedge angle on the adjusting wedge, therefore there is no settling

**ADVANTAGE NO. 4**

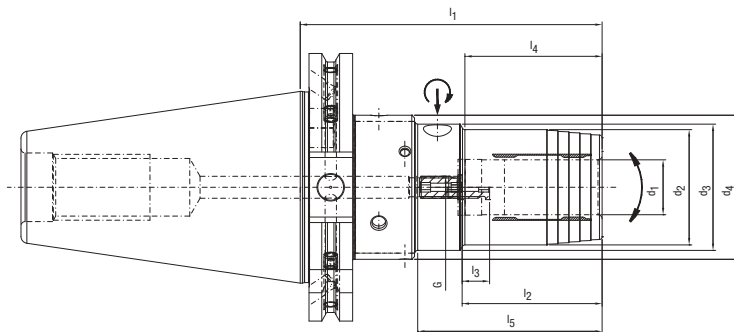
Straightforward and precise adjustment via adjusting screw





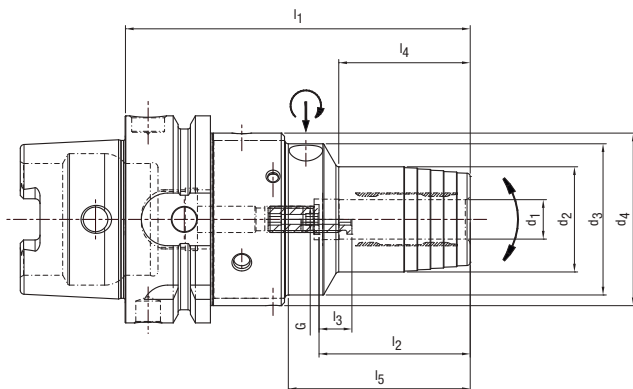
Hydraulic Chuck Comp-R ISO 7388-1, Form AD/AF

(prev. DIN 69871-AD/B)



Nominal size SK/ISO	Dimensions					G	Wrench size	Weight kg	Order designation	Order No.	Stock				
	d ₁	d ₂	d ₃	d ₄	l ₁							l ₂	l ₃	l ₄	l ₅
50	20	42	52.5	46	110	51	10	50	67.2	M8x1	3	3.5	15.512.50.20.Z	30614768	●
50	25	55	70	64	115	57	10	50	64.8	M16x1	8	4.4	15.512.50.25.Z	30614769	●
50	32	63	70	64	125	61	10	61	74.8	M16x1	8	4.7	15.512.50.32.Z	30614770	●

Hydraulic Chuck Comp-R DIN 69893-A



Nominal size HSK-A	Dimensions					G	Wrench size	Weight kg	Order designation	Order No.	Stock				
	d ₁	d ₂	d ₃	d ₄	l ₁							l ₂	l ₃	l ₄	l ₅
63	12	32	52.5	46	105	46	10	40	55.3	M8x1	3	1.3	16.512.63.12.Z	30614752	●
63	16	38	52.5	46	110	49	10	45	60.3	M8x1	3	1.4	16.512.63.16.Z	30614764	●
63	20	42	52.5	46	115	51	10	50	65.3	M8x1	3	1.5	16.512.63.20.Z	30614765	●
63	25	57	70	64	145	57	10	55	69.5	M16x1	8	2.9	16.512.63.25.Z	30614766	●
63	32	63	70	64	150	61	10	60	74.5	M16x1	8	3.1	16.512.63.32.Z	30614767	●



www.wte-tools.de

Bestell-Nr. 10145482 | V1.0.0

COMP-EN-NE-30-010-0815 Printed in Germany. Products and technical specifications are subject to change.

WTE
MAPAL GROUP