



# BT-SMB

Small micro boring bar



MAS 403-BT
C
Ø6
Ø34
Boring

Shank Coolant System MIN Range MAX Range Boring

Fig.1

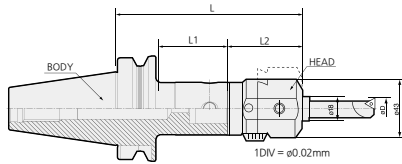
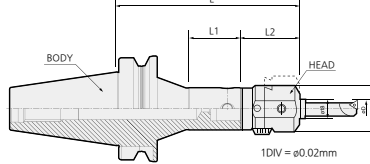
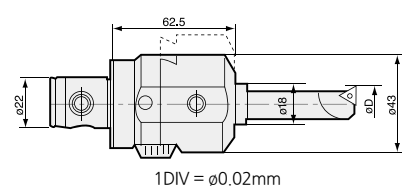


Fig.2



Head



- Adjustment length: 7mm

C This product does not support the internal coolant system.

✘ Red : Main component Blue : For separate purchase

- For more information on MD arbor, see 126p.

- For more information on BB bite, see 184p.

- For more information on the related parts, see 183p.

	Model No.			Boring range(ØD)	L	L1	L2	Fig.	Head weight
	Head model no.	Arbor Model No.	BB bite						
<b>BT30</b>	SMB4022	BT30-MD40F-45	BB18-□(S)	Ø6.0~Ø34.0	107.5	22	62.5	1	0.6
	SMB4022	BT30-MD40F-60	BB18-□(S)	Ø6.0~Ø34.0	122.5	36	62.5	1	0.6
	SMB4022	BT30-MD40F-80	BB18-□(S)	Ø6.0~Ø34.0	142.5	56	62.5	1	0.6
<b>BT40</b>	SMB4022	BT40-MD40F-60	BB18-□(S)	Ø6.0~Ø34.0	122.5	31	62.5	1	0.6
	SMB4022	BT40-MD40F-110R	BB18-□(S)	Ø6.0~Ø34.0	172.5	60	62.5	2	0.6
	SMB4022	BT40-MD40F-115	BB18-□(S)	Ø6.0~Ø34.0	177.5	83	62.5	1	0.6
<b>BT50</b>	SMB4022	BT50-MD40F-60	BB18-□(S)	Ø6.0~Ø34.0	122.5	22	62.5	1	0.6
	SMB4022	BT50-MD40F-195	BB18-□(S)	Ø6.0~Ø34.0	257.5	152	62.5	1	0.6
	SMB4022	BT50-MD40F-230R	BB18-□(S)	Ø6.0~Ø34.0	292.5	180	62.5	2	0.6

## BB Bite(For SMB)

Model No.	Boring range(ØD)		Insert	Screw	Kg
	Min	Max			
BB18-7(S)	8	28	TBGT0601□□L	BFTX0204A	0.1
BB18-9(S)	10	30	TBGT0802□□L	BFTX0204A	0.1
BB18-11(S)	12	32	TBGT1103□□L	BFTX0307A	0.1
BB18-13(S)	14	34	TBGT1103□□L	BFTX0307A	0.1
BB18-15(S)	16	36	TBGT1103□□L	BFTX0307A	0.2
BB18-17(S)	18	38	TBGT1103□□L	BFTX0307A	0.2



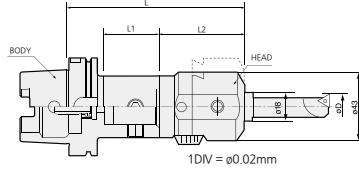
# HSK/SK-SMB

Small micro boring bar



DIN 69893-1	DIN69871 -1A/B	C	Ø6	Ø34	
Shank	Shank	Coolant System	MIN Range	MAX Range	Boring

Fig.1



Head

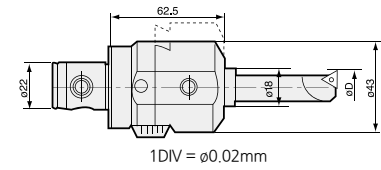


Fig.2

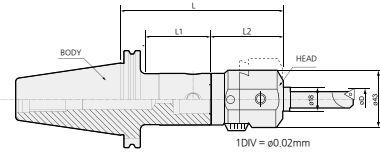
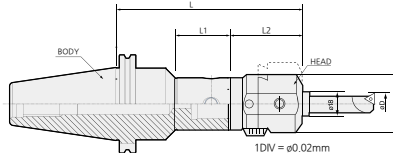


Fig.3



• Adjustment length : 17mm

**C** This product does not support the internal coolant system.

※ **Red** : Main component **Blue** : For separate purchase

• For more information on MD arbor, see **126p**

• For more information on BB bite, see **184p**

• For more information on the related parts, see **183p**

	Model No.			Boring range (ØD)	L	L1	L2	Fig.	Head weight
	Head model no.	Arbor Model No.	BB bite						
HSK63	SMB4022	HSK63A-MD40F-70	BB18-□(S)	Ø6.0-Ø34.0	132.5	41	62.5	1	0.6
SK40	SMB4022	SK40-MD40F-60	BB18-□(S)	Ø6.0-Ø34.0	122.5	40	62.5	2	0.6
	SMB4022	SK40-MD40F-100	BB18-□(S)	Ø6.0-Ø34.0	162.5	80	62.5	2	0.6
SK50	SMB4022	SK50-MD40F-145	BB18-□(S)	Ø6.0-Ø34.0	207.5	120	62.5	2	0.6
	SMB4022	SK50-MD40F-220R	BB18-□(S)	Ø6.0-Ø34.0	282.5	83	62.5	3	0.6

## BB Bite(For SMB)

Model No.	Boring range(ØD)		Insert	Screw	Kg
	Min	Max			
BB18-7(S)	8	28	TBGT0601□□L	BFTX0204A	0.1
BB18-9(S)	10	30	TBGT0802□□L	BFTX0204A	0.1
BB18-11(S)	12	32	TBGT1103□□L	BFTX0307A	0.1
BB18-13(S)	14	34	TBGT1103□□L	BFTX0307A	0.1
BB18-15(S)	16	36	TBGT1103□□L	BFTX0307A	0.2
BB18-17(S)	18	38	TBGT1103□□L	BFTX0307A	0.2



# BT-KMB

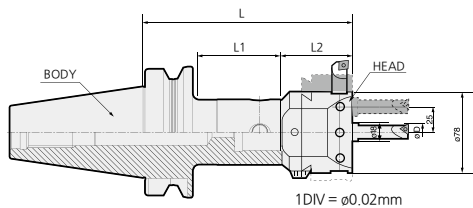
Micro boring



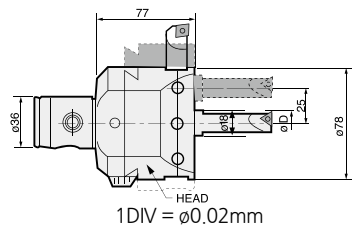
MAS 403-BT
C
Ø8
Ø165
Boring

Shank Coolant System MIN Range MAX Range Boring

Fig.1



Head



- Adjustment length: 7mm

**C** This product does not support the internal coolant system.

※ Red : Main component Blue : For separate purchase

- For more information on MD arbor, see **126p**

- For more information on BB bite, see **184p**

- For more information on the related parts, see **183p**

Model No.			Boring range(ØD)		L	L1	L2	Fig.	Head weight
Head model no.	Arbor Model No.	BB Bite	Bite position	Ø D					
BT40	KMB6336	BT40-MD63F-64	Center Hole	Ø8.0~Ø38.0	141	37	77	1	2.2
	KMB6336	BT40-MD63F-110			187	83	77	1	2.2
	KMB6336	BT40-MD63F-135	Eccentric Hole	Ø41.0~101.0	212	108	77	1	2.2
KMB6336	BT50-MD63F-75	152			35	77	1	2.2	
BT50	KMB6336	BT50-MD63F-130	Side Hole	Max.Ø165.0	207	87	77	1	2.2
	KMB6336	BT50-MD63F-195			272	152	77	1	2.2

※ The bite position has no bearing on the body model no.

## BB Bite(For KMB)

Model No.	Boring range(ØD)		Insert(ISO)	Screw	Kg
	Min	Max			
BB18-7(S)	8	28	TBGT0601□□L	BFTX0204A	0.1
BB18-9(S)	10	30	TBGT0802□□L	BFTX0204A	0.1
BB18-11(S)	12	32	TBGT1103□□L	BFTX0307A	0.1
BB18-13(S)	14	34	TBGT1103□□L	BFTX0307A	0.1
BB18-15(S)	16	36	TBGT1103□□L	BFTX0307A	0.2
BB18-17(S)	18	38	TBGT1103□□L	BFTX0307A	0.2

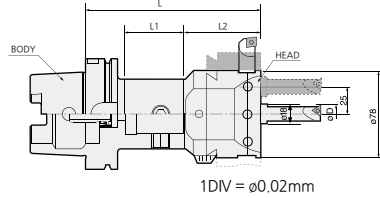


# HSK/SK-KMB

Micro boring



Fig.1



Head

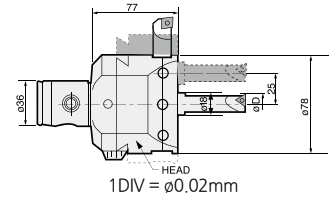


Fig.2

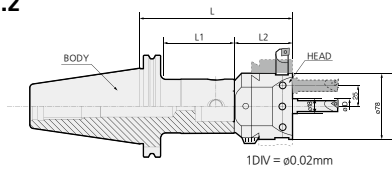
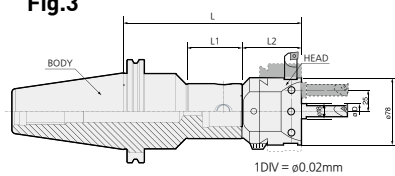


Fig.3



- Adjustment length: 7mm
- Ⓢ This product does not support the internal coolant system.
- ⊗ Red : Main component Blue : For separate purchase

- For more information on MD arbor, see **126p**
- For more information on BB bite, see **184p**
- For more information on the related parts, see **183p**

Model No.			Boring range(ØD)		L	L1	L2	Fig.	Head weight	
Head model no.	Arbor Model No.	BB Bite	Bite position	Ø D						
HSK63	KMB6336	HSK63A-MD63F-95	BB18-□(S)	Center Hole	Ø8.0~Ø38.0	172	69	77	1	2.2
SK40	KMB6336	SK40-MD63F-70	BB18-□(S)	Eccentric Hole	Ø41.0~101.0	147	50	77	2	2.2
SK50	KMB6336	SK50-MD63F-130	BB18-□(S)	Side Hole	Max.165.0	207	107	77	2	2.2
	KMB6336	SK50-MD63F-230R	BB18-□(S)			307	149	77	3	2.2

⊗ The bite position has no bearing on the body model no.

## BB Bite(For KMB)

Model No.	Boring range(ØD)		Insert(ISO)	Screw	Kg
	Min	Max			
BB18-7(S)	8	28	TBGT0601□□L	BFTX0204A	0.1
BB18-9(S)	10	30	TBGT0802□□L	BFTX0204A	0.1
BB18-11(S)	12	32	TBGT1103□□L	BFTX0307A	0.1
BB18-13(S)	14	34	TBGT1103□□L	BFTX0307A	0.1
BB18-15(S)	16	36	TBGT1103□□L	BFTX0307A	0.2
BB18-17(S)	18	38	TBGT1103□□L	BFTX0307A	0.2



# BT-SMH

Small micro boring bar



MAS 403-BT
C
Ø8
Ø38
Boring

Shank Coolant System MIN Range MAX Range Boring

Fig.1

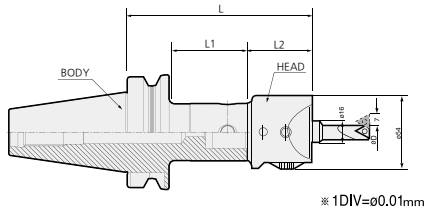
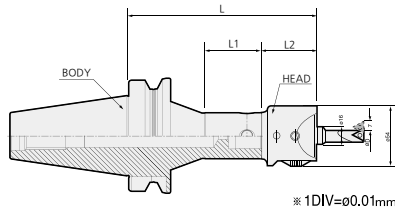
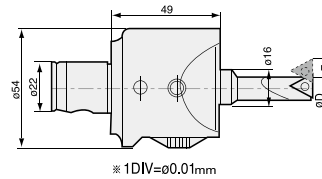


Fig.2



Head



• Adjustment length: 7mm

C This product does not support the internal coolant system.

※ Red : Main component Blue : For separate purchase

• For more information on MD arbor, see 126p

• For more information on BB bite, see 184p

• For more information on the related parts, see 183p

	Model No.			Boring range (ØD)	L	L1	L2	Fig.	Head weight
	Head model no.	Arbor Model No.	BB Bite						
BT30	SMH4022	BT30-MD40F-45	BB16-□(S)	Ø6.0~Ø34.0	94	22	49	1	0.6
	SMH4022	BT30-MD40F-60	BB16-□(S)	Ø6.0~Ø34.0	109	36	49	1	0.6
	SMH4022	BT30-MD40F-80	BB16-□(S)	Ø6.0~Ø34.0	129	56	49	1	0.6
BT40	SMH4022	BT40-MD40F-60	BB16-□(S)	Ø6.0~Ø34.0	109	31	49	1	0.6
	SMH4022	BT40-MD40F-110R	BB16-□(S)	Ø6.0~Ø34.0	159	60	49	2	0.6
	SMH4022	BT40-MD40F-115	BB16-□(S)	Ø6.0~Ø34.0	164	83	49	1	0.6
BT50	SMH4022	BT50-MD40F-60	BB16-□(S)	Ø6.0~Ø34.0	109	22	49	1	0.6
	SMH4022	BT50-MD40F-195	BB16-□(S)	Ø6.0~Ø34.0	244	152	49	1	0.6
	SMH4022	BT50-MD40F-230R	BB16-□(S)	Ø6.0~Ø34.0	279	180	49	2	0.6

## BB Bite(For SMH) For separate purchase

Model No.	Boring range(center)		S	ød	L1	L2	Insert(ISO)	Insert Screw	Wrench
	Min.	Max.							
BB16 - 5(S)	5	19	2.75	16	34	20	WBG0601□□L	BFTX0203A	TRX06
BB16 - 7(S)	7	21	3.5			30	TBGT0601□□L	BFTX0204A	
BB16 - 9(S)	9	23	4.5			40	TPGT0802□□L	BFTX0307A	
BB16 - 11(S)	11	25	5.5			45	TPGT1103□□L		
BB16 - 15(S)	15	29	7.5			50	TPGT1604□□L	BFTX0410A	TRX10
BB16 - 19(S)	19	33	9.5			60	TPGT1604□□L		TRX15



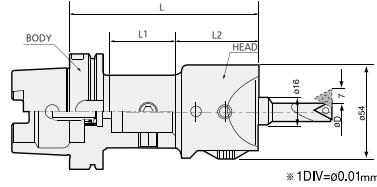
# HSK/SK-SMH

Small micro boring bar



DIN 69893-1	DIN69871 -1A/B	C	Ø8	Ø38	
Shank	Shank	Coolant System	MIN Range	MAX Range	Boring

Fig.1



Head

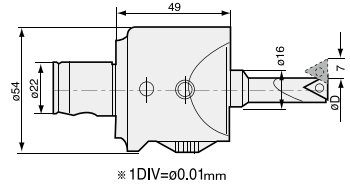


Fig.2

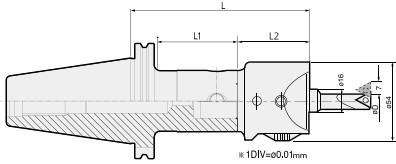
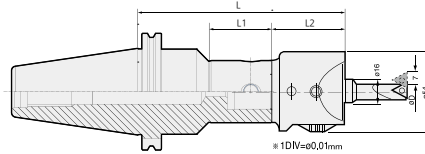


Fig.3



• Adjustment length : 17mm

**C** This product does not support the internal coolant system.

※ Red : Main component Blue : For separate purchase

• For more information on MD arbor, see **126p**

• For more information on BB bite, see **184p**

• For more information on the related parts, see **183p**

	Model No.			Boring range (ØD)	L	L1	L2	Fig.	Head weight
	Head model no.	Arbor Model No.	BB Bite						
HSK63	SMH4022	HSK63A-MD40F-70	BB16-□(S)	Ø6.0~Ø34.0	132.5	41	49	1	0.6
SK40	SMH4022	SK40-MD40F-60	BB16-□(S)	Ø6.0~Ø34.0	122.5	40	49	2	0.6
	SMH4022	SK40-MD40F-100	BB16-□(S)	Ø6.0~Ø34.0	162.5	80	49	2	0.6
SK50	SMH4022	SK50-MD40F-145	BB16-□(S)	Ø6.0~Ø34.0	207.5	120	49	2	0.6
	SMH4022	SK50-MD40F-220R	BB16-□(S)	Ø6.0~Ø34.0	282.5	83	49	3	0.6

## BB Bite(For SMH) For separate purchase

Model No.	Boring range(ØD)		Insert(ISO)	Screw	Kg
	Min	Max			
BB16-7(S)	8	28	TBGT0601□□L	BFTX0204A	0.1
BB16-9(S)	10	30	TBGT0802□□L	BFTX0204A	0.1
BB16-11(S)	12	32	TBGT1103□□L	BFTX0307A	0.1
BB16-13(S)	14	34	TBGT1103□□L	BFTX0307A	0.1
BB16-15(S)	16	36	TPGT1604□□L	BFTX0307A	0.2
BB16-17(S)	18	38	TBGT1604□□L	BFTX0307A	0.2



# SMH SET

Small micro boring Set



SMH(SET1)



SMH(SET2)



SMH(SET4)



## SET NUMBER






TYPE	Model No.	SMH (SET1)	SMH (SET2)	SMH (SET4)	Applicable insert
Boring head	SMH4022	1	1	1	
Arbor	BT40-MD40F-60	1			
Arbor	BT50-MD40F-60		1		
BB Bite (STEEL)	BB16-0624(S)	1	1	1	WBG060102L
BB Bite (STEEL)	BB16-0832(S)	1	1	1	WBG060102L
BB Bite (STEEL)	BB16-1040(S)	1	1	1	TPG080202L
BB Bite (STEEL)	BB16-1253(S)	1	1	1	TPG080202L
BB Bite (STEEL)	BB16-1668(S)	1	1	1	TPG110304L
BB Bite (STEEL)	BB16-2083(S)	1	1	1	TPG110304L
BB Bite (STEEL)	BB16-2590(S)	1	1	1	TPG110304L
BB Bite (STEEL)	BB16-3090(S)	1	1	1	TPG110304L
Screw	BFTX0203A	2	2	2	
Screw	BFTX0204A	2	2	2	
Screw	BFTX0307A	2	2	2	
Wrench	LW-3	1	1	1	
Wrench	LW-5	1	1	1	
Wrench	TRX06	1	1	1	
Wrench	TRX10	1	1	1	



# SMB SPARE PART

Small micro boring bar related parts

## Spare Part

Type	Main purchased item			Item for separate purchase	
	Boring head	Taper screw	Wrench	Boring bite	MD arbor
Images					
Model No.					
<b>SMB</b>	SMB4022	BTT1013F	LW-2.5	BB18	MD40F






- The taper screw is built in the arbor by default.
- For more information on MD arbor, see **126p**.



# KMB SPARE PART

Micro boring related parts

## Spare Part

Type	Main purchased item			Item for separate purchase	
	Boring head	Taper screw	Wrench	Boring bite	MD arbor
Images					
Model No.					
<b>KMB</b>	KMB6336	BTT1620F	LW-4.0	BB18	MD63F






- The taper screw is built in the arbor by default.
- For more information on MD arbor, see **126p**.



# SMH SPARE PART

Small micro boring bar (precision type) related parts

## Spare Part

Type	Main purchased item			Item for separate purchase	
	Boring head	Taper screw	Wrench	Boring bite	MD arbor
Images					
Model No.					
<b>SMH</b>	SMH4022	BTT1013F	LW-3.0	BB16	MD40F

- The taper screw is built in the arbor by default.
- For more information on MD arbor, see **126p**.