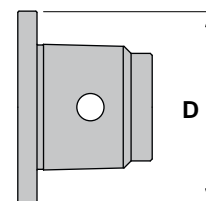





Characteristics:  
Manual caps.

Eigenschaften:  
Manuelle Verschußstopfen.



## MC

Reference Bezeichnung	Manual Cap Manuelle Verschußstopfen	
PSC32-MC	32	0,080
PSC40-MC	40	0,150
PSC50-MC	50	0,180
PSC63-MC	63	0,420
PSC80-MC	80	1,000

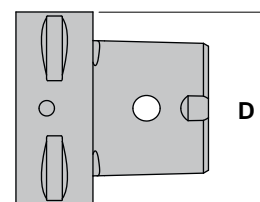


E




Characteristics:  
Automatic caps.

Eigenschaften:  
Automatische Verschußstopfen.



## AC

Reference Bezeichnung	Automatic Cap Automatische Verschußstopfen	
PSC40-AC	40	0,250
PSC50-AC	50	0,445
PSC63-AC	63	0,700
PSC80-AC	80	1,700