

Steel Pin Gauge Sets

Features

- Standard: Factory Standard
- Boxed sets complete with handle
- Each pin is laser engraved with its size above 1.5mm
- Each pin is stored in its own tube, marked with the pin size
- Pin length 50mm
- Supplied with a certificate of conformity
- Fully hardened to 60/62 HRC
- Manufacturing tolerance +/- .002mm



STEEL PIN GAUGE SETS

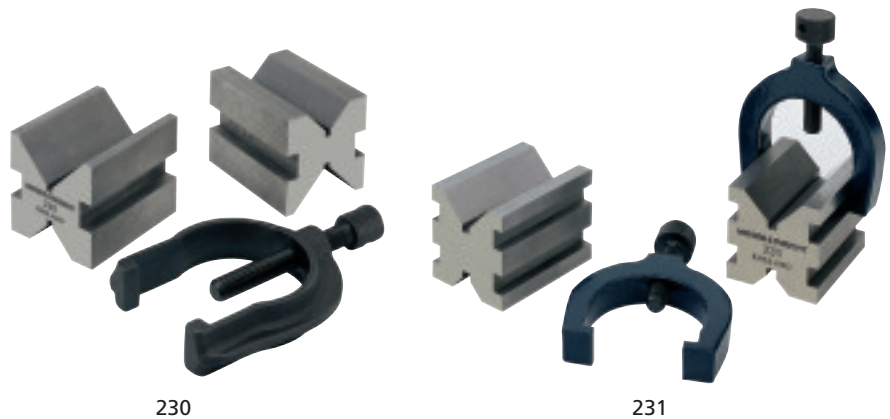
Code No	Description	Code No	Description	Code No	Description
MW725-01	Steel Pin Gauge Set 51pce 0.50-1.00x.01mm +/- 0.002mm C/W Handle	MW725-05	Steel Pin Gauge Set 51pce 0.50-1.00x.01mm +/- 0.002mm C/W Handle	MW725-09	Steel Pin Gauge Set 51pce 0.50-1.00x.01mm +/- 0.002mm C/W Handle
MW725-02	Steel Pin Gauge Set 51pce 0.50-1.00x.01mm +/- 0.002mm C/W Handle	MW725-06	Steel Pin Gauge Set 51pce 0.50-1.00x.01mm +/- 0.002mm C/W Handle	MW725-10	Steel Pin Gauge Set 51pce 0.50-1.00x.01mm +/- 0.002mm C/W Handle
MW725-03	Steel Pin Gauge Set 51pce 0.50-1.00x.01mm +/- 0.002mm C/W Handle	MW725-07	Steel Pin Gauge Set 51pce 0.50-1.00x.01mm +/- 0.002mm C/W Handle		
MW725-04	Steel Pin Gauge Set 51pce 0.50-1.00x.01mm +/- 0.002mm C/W Handle	MW725-08	Steel Pin Gauge Set 51pce 0.50-1.00x.01mm +/- 0.002mm C/W Handle		

Traditional Vee Blocks & Clamps

Features

230 General Workshop grade

- Manufactured from close grained cast iron
- Supplied in matched and numbered pairs
- One steel clamp and screw supplied per pair



230

231

VEE BLOCKS & CLAMPS

Code No	Accuracy (mm)	Accuracy (inch)	Range (mm)	Range (inch)	Width (mm)	Width (inch)	Length (mm)	Length (inch)	Height (mm)	Height (inch)
230	0.05	0.020	40	1 1/2	40	1 1/2	50	2	40	1 1/2
231	0.01	0.004	25	1	32	1 1/4	42	1 5/8	32	1 1/4

SPARE CLAMPS

Code No	Description
23001	Spare Clamp and Screw for 230
23101	Spare Clamp and Screw for 231