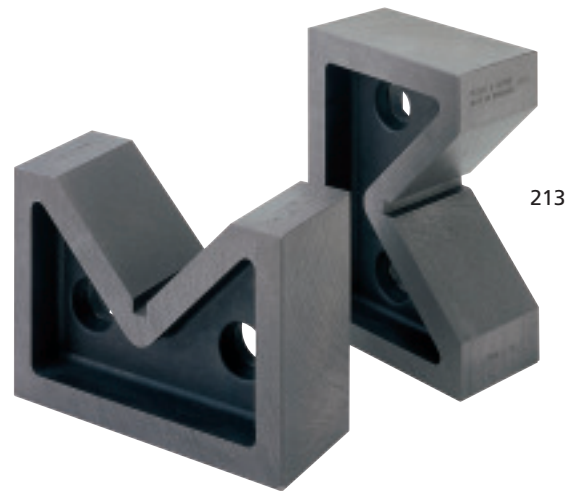


Traditional Vee Blocks Standard Pairs

Features

- Supplied in matched and numbered pairs only
- Manufactured from close grained cast iron
- Ground faces



VEE BLOCKS STANDARD PAIRS

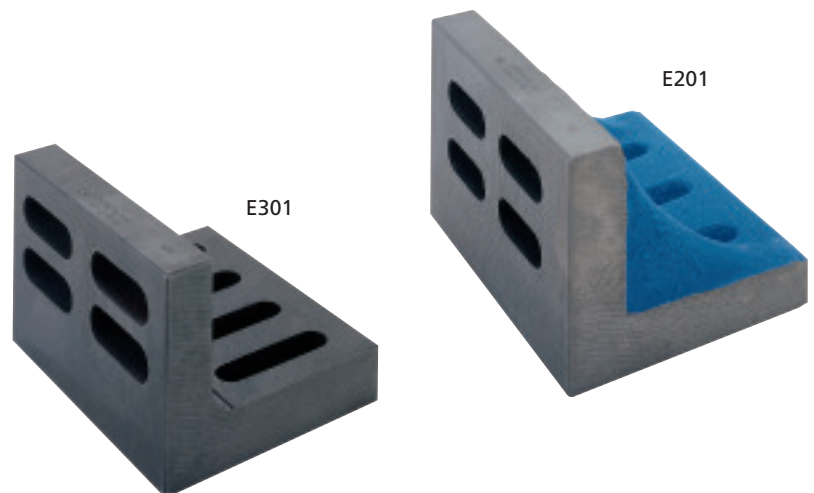
Code No	Accuracy (mm)	Accuracy (inch)	Capacity (mm)	Capacity (inch)	Width (mm)	Width (inch)	Length (mm)	Length (inch)	Height (mm)	Height (inch)
211	0.04	0.0015	63	2.48	80	3.15	35	1.38	60	2.36
212	0.04	0.0015	80	3.15	100	3.94	40	1.57	75	2.95
213	0.05	0.0020	100	3.94	130	5.12	45	1.77	90	3.54
214	0.05	0.0020	125	4.92	150	5.90	50	1.97	100	3.94
215	0.06	0.0025	160	6.30	180	7.09	60	2.36	130	5.12
216	0.06	0.0025	200	7.87	220	8.66	70	2.76	160	6.30

Traditional Angle Plates

Features

Complies with: BS5535 Grade B

- Manufactured from close grained cast iron
- Heat stabilised to prevent distortion
- Machined to tolerance on all four edges and two faces (four faces on open end version)



METRIC / IMPERIAL ANGLE PLATES

Code No.	Description	Length (mm)	Length (inch)	Width (mm)	Width (inch)	Height (mm)	Height (inch)
E200	Webbed	100	3.94	60	2.36	80	3.15
E201	Webbed	131	5.15	86	3.38	106	4.17
E202	Webbed	160	6.30	100	3.94	125	4.92
E204	Webbed	200	7.87	125	4.92	160	6.30
E301	Open End	125	4.92	80	3.15	100	3.94
E302	Open End	160	6.30	100	3.94	125	4.92
E304	Open End	200	7.87	125	4.92	160	6.30